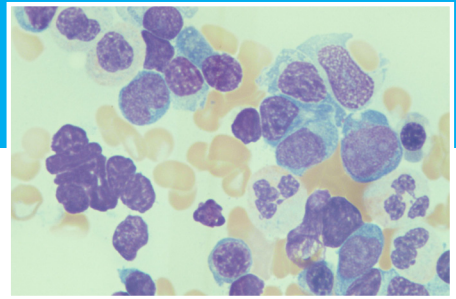
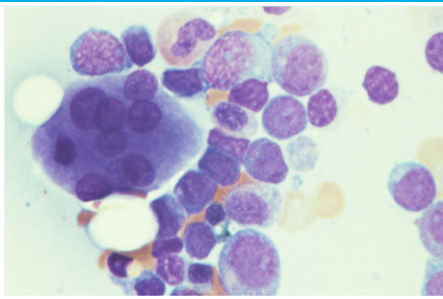


# Myeloid Malignancy Workshop

February 11, 2023

9:00am – 4:30pm (breakfast buffet 8:30am)

Davis Auditorium  
1470 Madison Avenue  
New York, NY 10029



**Virtual and Live Activity**

## Course Directors

John Mascarenhas, MD  
Marina Kremyanskaya, MD, PhD  
Ruben A. Mesa, MD, FACP

Provided by:



**MPN-Research Consortium**



**Icahn  
School of  
Medicine at  
Mount  
Sinai**

# Myeloid Malignancy Workshop

## Program Description

The Myeloid Malignancy Workshop will be a one day hybrid event focused on the science and medicine of myelodysplastic syndromes, myeloproliferative neoplasms, and acute myeloid leukemia. The workshop will include internationally recognized clinical and laboratory experts in the field that will provide focused talks intended to highlight the cutting edge science and recent evidence based advances in clinical care of myeloid malignancies.

## Educational Objectives

At the conclusion of this activity, participants will be able to:

- Understand the molecular and immunologic vulnerabilities driving drug development for MDS, MPN and AML
- Select the appropriate evidence based therapies for patients with myeloid malignancies
- Recognize the remaining unmet needs in treating myeloid malignancies.
- Identify the appropriate patients with myelofibrosis and myelodysplastic syndromes for hematopoietic stem cell transplantation
- Discuss strategies to incorporate disease-modifying therapies and strive for deeper responses in patients with myeloproliferative neoplasms
- Discuss the emerging results of clinical trials that are investigating therapies in AML/MDS
- Identify treatment goals for systemic mastocytosis that incorporate next generation kit inhibitors.

## Target Audience

The target audience for this CME-accredited event will include clinical and laboratory based physicians, trainees, laboratory investigators, pharmacists, nurses, nurse practitioners, physician assistants, and patients.

## Accreditation

The Icahn School of Medicine at Mount Sinai is accredited by the Accreditation Council for Continuing Medical Education to provide continuing medical education for physicians.

## Credit Designation

The Icahn School of Medicine at Mount Sinai designates this hybrid (live and remote) activity for a maximum of 5.5 AMA PRA Category 1 Credit(s)<sup>™</sup>. Physicians should claim only the credit commensurate with the extent of their participation in the activity.

## Physician Assistants

NCCPA accepts AMA PRA Category 1 Credit<sup>™</sup> from organizations accredited by ACCME.

Nursing Credit: The American Nurses Credentialing Center (ANCC) will accept 1.0 AMA PRA Category 1 Credit<sup>™</sup> as equal to 1.0 ANCC contact hour. Nurses should inquire with their specialty organizations and professional institutions as to their acceptance of AMA PRA Category 1 Credits<sup>™</sup>.

## Verification of Attendance:

Verification of attendance will be provided to all professionals.

## Special Needs

The Icahn School of Medicine at Mount Sinai is in full compliance with provisions of the Americans with Disabilities Act (ADA) and is accessible for individuals with special needs. If you would like to attend this conference and require any special needs or accommodations please contact the Page and William Black Post-Graduate School of Medicine at [cme@mssm.edu](mailto:cme@mssm.edu).

## Faculty Disclosure

It is the policy of Icahn School of Medicine at Mount Sinai (ISMMS) to ensure objectivity, balance, independence, transparency, and scientific rigor in all CME-accredited educational activities. All faculty participating in the planning or implementation of an activity accredited by ISMMS are expected to disclose all of their financial relationships with ineligible companies existing within the prior 24 months. Relevant financial relationships will be mitigated and disclosed to learners before the activity takes place. Presenters must also make a meaningful disclosure to the audience of their discussions of unlabeled or unapproved drugs or devices. This information will be available as part of the course material.

# February 11, 2023

## AGENDA

8:30AM – 9:00AM	<b>Registration &amp; Continental Breakfast</b>	
9:00AM – 9:15AM	Introduction	<i>John Mascarenhas, MD</i>
9:15AM – 9:45AM	Targeting p53 in MPNs	<i>Ronald Hoffman, MD</i>
9:45AM – 10:15AM	The Role of Megakaryocytes in MF	<i>John Crispino, PhD</i>
10:15AM – 10:45AM	Next Generation JAK2 Inhibition	<i>Andrew Dunbar, MD</i>
10:45AM – 11:00AM	<b>Break</b>	
11:00AM – 11:30AM	Novel Mechanisms to Address Anemia	<i>Amit Verma, MD</i>
11:30AM – 12:00PM	Differentiation Therapy in AML	<i>Eunice S. Wang, MD</i>
12:00PM – 1:00PM	<b>*Lunch Roundtable: Role of HSCT in MDS and MF, Who, When and How</b>	<i>Vikas Gupta, MD; Alla Keyzner; Jeanne Palmer, MD; Roni Tamari, MD</i>
1:00PM – 1:30PM	FLT3 Inhibition in AML	<i>Gail J. Roboz, MD</i>
1:30PM – 2:00PM	Next Generation KIT Inhibitors in Systemic Mastocytosis	<i>Raajit K. Rampal, MD, PhD</i>
2:00PM – 2:30PM	Type 1 Interferon Reshapes Hematopoietic Differentiation Trajectories in MPN	<i>Anna Nam, MD</i>
2:30PM – 3:00PM	Immune Based Approaches to the Treatment of MDS/AML	<i>Amer Zeidan, MD</i>
3:00PM – 3:30PM	Novel Approaches to Targeting BCL2	<i>Marina Konopleva, MD, PhD</i>
3:30PM – 4:00PM	Wrap-Up	

## Registration Fees

	In-Person	Virtual Attendance
Physicians	\$100	\$75
Lab Based	\$75	\$50
Industry	\$150	\$125
Residents/Fellows	Complimentary	

*\*\*Complimentary registration for Residents and Fellows, nurses, nurse practitioners, physician assistants, pharmacists must be done online. Please email [cme@mssm.edu](mailto:cme@mssm.edu) with a copy of your hospital ID to receive a Complimentary Online Registration Code.*

## Meeting Location

Davis Auditorium  
1470 Madison Avenue  
New York, NY 10029

### Directions and/or Parking

<http://icahn.mssm.edu/about/visiting>  
Discounted parking is available at Mount Sinai, use the entrance to the Mount Sinai visitors' parking garage located on the SW corner of 99th Street and Park Avenue. Parking ticket will be validated at the registration desk.

## Accommodations Information

If you would like assistance with hotel arrangements, please contact our Housing Manager, Denise Newman by email: [dnew229@aol.com](mailto:dnew229@aol.com) or call 718-835-4911

## FACULTY

### COURSE DIRECTORS

#### **JOHN MASCARENHAS, MD**

Professor of Medicine  
Icahn School of Medicine at Mount Sinai  
Director, Adult Leukemia Program  
Tisch Cancer Institute  
Mount Sinai Health System  
New York, NY

#### **RUBEN A. MESA, MD, FACP**

Professor of Medicine  
Executive Director  
Mays Cancer Center at UT Health San Antonio MD Anderson  
Mays Family Foundation Distinguished University  
Presidential Chair  
San Antonio, TX

### GUEST FACULTY

#### **JOHN CRISPINO, PhD, MBA**

Member and Director, Division of Experimental Hematology  
The Wall Street Committee Endowed Chair  
St. Jude Children's Research Hospital  
Memphis, TN

#### **ANDREW DUNBAR, MD**

Assistant Attending Physician  
Division of Leukemia  
Department of Medicine  
Memorial Sloan Kettering Cancer Center  
New York, NY

#### **VIKAS GUPTA, MD, FRCP, FRCPath**

Site Group Lead, Leukemia/MPN Programs  
Director, Malignant hematology Fellowship Program  
Professor, Department of Medicine  
Princess Margaret Cancer Centre  
Toronto  
Canada

#### **MARINA KONOPLEVA, MD, PhD**

Professor, Departments of Oncology and  
Molecular Pharmacology  
Director, Leukemia Program  
Co-Director, Blood Cancer Institute  
Montefiore Einstein Cancer Center  
Bronx, NY

#### **ANNA S. NAM, MD**

Assistant Professor of Pathology and Laboratory  
Medicine  
Weill Cornell Medicine  
New York, New York

#### **JEANNE PALMER, MD**

Associate Professor of Medicine  
Mayo Clinic Arizona  
Phoenix, AZ

### ICAHN SCHOOL OF MEDICINE AT MOUNT SINAI

#### **RONALD HOFFMAN, MD**

Albert A. and Vera G. List Professor of Medicine  
Director, Myeloproliferative Disorders Research Program  
Tisch Cancer Institute  
Icahn School of Medicine at Mount Sinai  
Mount Sinai Health System  
New York, NY

#### **MARINA KREMYANSKAYA, MD, PhD**

Associate Professor  
Icahn School of Medicine at Mount Sinai  
Tisch Cancer Institute  
Mount Sinai Health System  
New York, NY

#### **RAAJIT K. RAMPAL, MD, PhD**

Associate Member  
Clinical Director, Leukemia Service  
Memorial Sloan Kettering Cancer Center  
New York, NY

#### **GAIL J. ROBOZ, MD**

William S. Paley Professor of Medicine  
Director, Clinical and Translational Leukemia Programs  
Weill Cornell Medical College  
The New York Presbyterian Hospital  
New York, NY

#### **RONI TAMARI, MD**

Assistant Attending  
Adult Bone Marrow Transplant Service  
Memorial Sloan Kettering Cancer Center  
New York, NY

#### **AMIT VERMA, MD**

Director, Division of Hemato-Oncology  
Albert Einstein College of Medicine  
Montefiore Medical Center  
Bronx, NY

#### **EUNICE S. WANG, MD**

Professor of Oncology  
Roswell Park Comprehensive Cancer Center  
Chief, Leukemia and Benign Hematology Services  
Medical Director, Chemo/Infusion Centers  
Buffalo, NY

#### **AMER ZEIDAN, MBBS, MHS**

Associate Professor of Internal Medicine (Hematology)  
Assistant Medical Director for Hematologic Malignancies  
Clinical Trials Office  
Hematology Early Therapeutics Research  
Director, Leukemia and Myeloid Disease Aligned Research Team  
Leader Section of Hematology  
Department of Internal Medicine  
Yale School of Medicine  
Yale Cancer Center and Smilow Cancer Hospital  
New Haven, CT

#### **ALLA KEYZNER, MD**

Associate Professor  
Associate Director of Allogeneic Stem Cell Program  
Director of BMT Quality Improvement  
Tisch Cancer Institute Bone Marrow & Stem Cell Transplantation  
Icahn School of Medicine at Mount Sinai  
Mount Sinai Health System  
New York, NY

# Myeloid Malignancy Workshop

February 11, 2023

9:00am – 4:30pm (breakfast buffet 8:30am)

Davis Auditorium  
1470 Madison Avenue  
New York, NY 10029

## REGISTRATION

	In-Person	Virtual Attendance
Physicians	\$100	\$ 75
Lab Based	\$ 75	\$ 50
Industry	\$150	\$125
Residents/Fellows	Complimentary (In-Person Attendance Only)	

*\*\*Complimentary registration for residents, fellows, nurses, nurse practitioners, physician assistants, and pharmacists for in person attendance. Please email [cme@mssm.edu](mailto:cme@mssm.edu) with a copy of your hospital ID to receive a Complimentary Online Registration Code.*

## HOW TO REGISTER

**Online:** <https://mssm.cloud-cme.com/MW23>

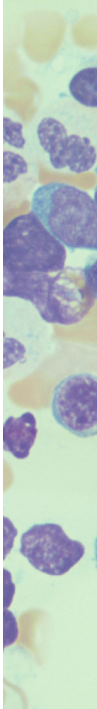
**Cancellation Policy:** All refund and cancellation requests must be emailed to the CME office at [cme@mssm.edu](mailto:cme@mssm.edu) by January 23, 2023. Cancellations after this date are not eligible for a refund. An administrative fee of \$50 will be deducted from your refund. No refunds will be issued for registration fees that are equal to or less than \$50.

**For Conference Information, email [cme@mssm.edu](mailto:cme@mssm.edu).**



Icahn  
School of  
Medicine at  
Mount  
Sinai

Icahn School of Medicine at Mount Sinai  
The Page and William Black Post-Graduate School  
One Gustave L. Levy Place, Box 1193  
New York, NY 10029-6574



# Myeloid Malignancy Workshop

February 11, 2023

9:00am – 4:30pm (breakfast/buffet 8:30am)

Davis Auditorium  
1470 Madison Avenue  
New York, NY 10029