

Celebrating
50
years
1968-2018



Icahn School
of Medicine at
**Mount
Sinai**

Annual YAHR LECTURE
and Celebration of the Career of
BERNARD COHEN, MD

**THE VESTIBULAR,
CEREBELLAR, AND
SYMPATHETIC
SYSTEMS:
PAST AND FUTURE**

Friday, April 13, 2018

9:00AM-6:00PM

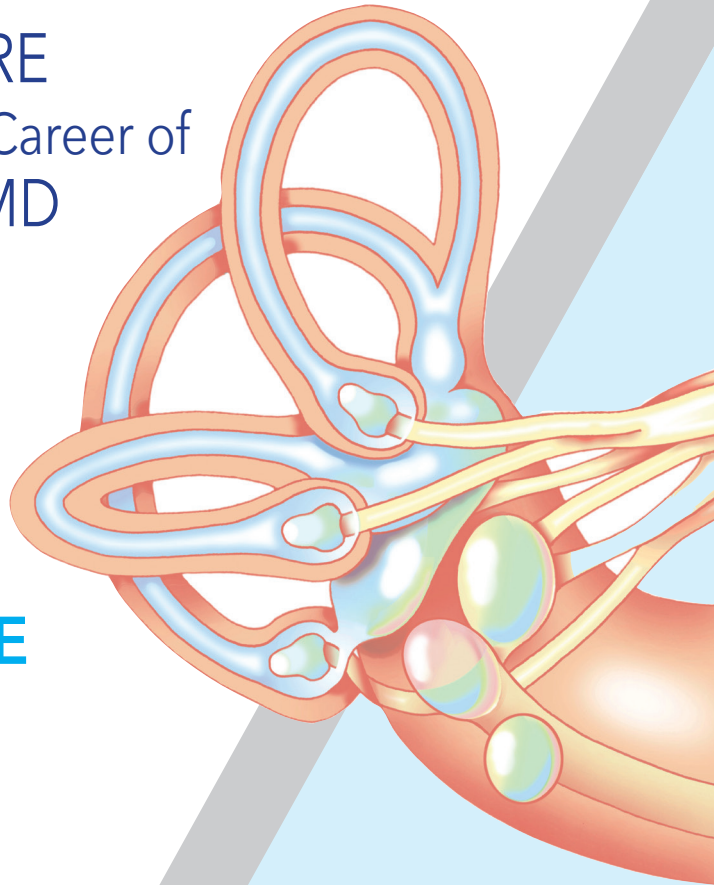
Course Director
BERNARD COHEN, MD
Professor Emeritus
Department of Neurology

Course Co-Director
JOANNA JEN, MD, PhD
Dr. Morris B. Bender Professor of Neurology
Director, Division of Neuro-Otology and
Neurogenetics
Department of Neurology,
Otolaryngology, and Neurosurgery

Icahn School of Medicine at Mount Sinai
GOLDWORM AUDITORIUM

1425 Madison Avenue
New York, NY

Sponsored by
Department of Neurology
Icahn School of Medicine at Mount Sinai



PROGRAM DESCRIPTION

The interrelated functions of several systems that evolved hundreds of millions of years ago - the vestibular, cerebellar, sympathetic, and cardiovascular systems - have important clinical implications in modern neurology and neuro-otology. Operating largely out of consciousness, the vestibular system responds to head and body movement in any direction, stabilizes the head and body with regard to gravity in three-dimensional space, and maintains vital bodily functions through an interaction of vestibular-related components of the brainstem and cerebellum with the cardiovascular and sympathetic systems.

This symposium presents new basic data and clinical findings that have arisen over the first years of the 21st Century with regard to these systems and includes these broad topics:

- Fundamental vestibular, brainstem, and cerebellar science
- New approaches to vestibular diagnosis, pathology, and treatment
- - Investigations of the vestibular impact on the cardiovascular and sympathetic systems

WHO SHOULD ATTEND?

Neurologists, neuro-ophthalmologists, otolaryngologists, including residents and fellows.

LEARNING OBJECTIVES

- Discuss the relationship between eye movements and various neurologic conditions and how they may facilitate differential diagnosis and management.
- Identify the impact of the vestibular system on sympathetic function.
- Create an appropriate management plan for patients with Mal de Debarquement Syndrome.

ACCREDITATION

The Icahn School of Medicine at Mount Sinai is accredited by the Accreditation Council for Continuing Medical Education to provide continuing medical education for physicians.

CREDIT DESIGNATION

The Icahn School of Medicine at Mount Sinai designates this live activity for a maximum of **8.5 AMA PRA Category 1 Credit(s)[™]**. Physicians should claim only the credit commensurate with the extent of their participation in the activity.

VERIFICATION OF ATTENDANCE

Verification of attendance will be provided to all professionals.

SPECIAL NEEDS

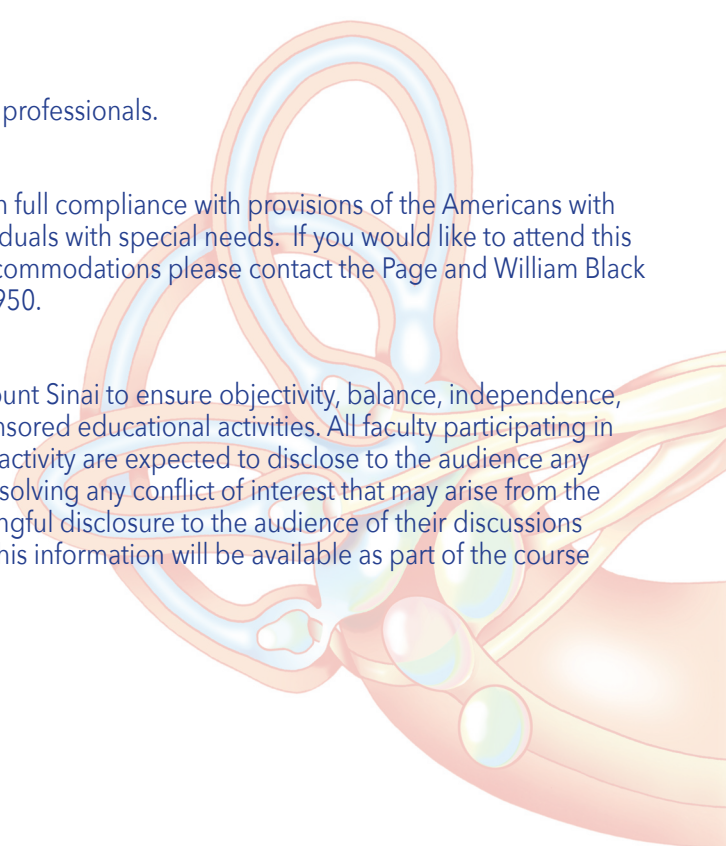
The Icahn School of Medicine at Mount Sinai is in full compliance with provisions of the Americans with Disabilities Act (ADA) and is accessible for individuals with special needs. If you would like to attend this conference and require any special needs or accommodations please contact the Page and William Black Post-Graduate School of Medicine at 212-731-7950.

FACULTY DISCLOSURE

It is the policy of Icahn School of Medicine at Mount Sinai to ensure objectivity, balance, independence, transparency, and scientific rigor in all CME-sponsored educational activities. All faculty participating in the planning or implementation of a sponsored activity are expected to disclose to the audience any relevant financial relationships and to assist in resolving any conflict of interest that may arise from the relationship. Presenters must also make a meaningful disclosure to the audience of their discussions of unlabeled or unapproved drugs or devices. This information will be available as part of the course materials.

MEETING LOCATION

Icahn School of Medicine at Mount Sinai
1425 Madison Avenue
Goldwurm Auditorium
New York, NY



PROGRAM

Friday, April 13, 2018

Goldwurm Auditorium, 1st floor of the Icahn Building,
98th Street and Madison Avenue

- 9:00-9:10am **Opening Remarks**
Barbara Vickrey, MD, MPH
- 9:10-9:20 **Semicircular Canal-Induced Eye Movements: A View from the Past**
Bernard Cohen, MD
- 9:20-10:00 **Yahr Lecture:
Testing Semicircular Canal Function:
from Pneumatic Hammer (1892) to
Video Head Impulses (2009)**
G. Michael Halmagyi, BSC, MBBS, MD
- 10:00-10:30 **Otolith-Induced cVEMPs and
oVEMPs**
Ian Curthoys, PhD
- 10:30 -10:45 **BREAK**
- 10:45-11:15 **Prosthetic Restoration of Vestibulo-
Ocular Reflexes - First-in-Human
Results of Long-Term MVI™
Semicircular Canal Implant
Stimulation**
Charles C. Della Santina, PhD, MD
- 11:15-11:45 **A Model of Neurogenic Syncope**
Theodore Raphan, PhD
- 11:45-12:10pm **Treatment of VasoVagal Syncope**
André Diedrich, MD, PhD
- 12:10-1:30 **Working Lunch with Residents**
Joanna Jen, MD, PhD
- 1:30-2:00 **Wernicke's Encephalopathy: A
Window to Selective Vulnerability
of the Neural Networks that Control
Vertical Gaze**
David Zee, MD
- 2:00-2:30 **Controlling Blood Pressure Requires
Inputs from Multiple Sensory
Systems**
Bill J. Yates, PhD
- 2:30-3:00 **Vestibulo-Sympathetic Reflex
Pathways**
Gay Holstein, PhD



*Bernard Cohen, MD with COSMOS
Rotator*

- 3:00-3:30 **An Integrator for Vergence in the
Pretectum**
Jean Buettner-Ennever, PhD
Janet C. Rucker, MD
- 3:30-3:45 **Mal de Debarquement Syndrome:
Treatment and Vestibular Source**
Mingjia Dai, PhD
Sergei Yakushin, PhD
- 3:45-4:05 **Vestibulo-Cerebellar Basis of the
Mal de Debarquement Syndrome**
Catherine Cho, MD
- 4:05-4:20 **BREAK**
- 4:20-4:50 **How Cerebellar Motor Learning
Keeps Saccades Accurate**
Albert Fuchs, PhD
- 4:50-5:20 **"Precision" Neuro-Otology: What
Can We Learn about Vestibular
Dysfunction by Measuring
Behavioral Variability?**
Richard F. Lewis, MD
- 5:20-5:50 **Cerebellar Genetics**
Joanna Jen, MD, PhD
- 5:50-6:00 **Closing Remarks**
Bernard Cohen, MD
- 6:00-8:00 **RECEPTION**



ICAHN SCHOOL OF MEDICINE AT MOUNT SINAI

BERNARD COHEN, MD

Professor Emeritus
Department of Neurology

BARBARA VICKREY, MD, MPH

Henry P. and Georgette Goldschmidt Professor of Neurology
System Chair
Department of Neurology

JOANNA JEN, MD, PhD

Dr. Morris B. Bender Professor of Neurology
Director, Division of Neuro-Otology and Neurogenetics
Department of Neurology, Otolaryngology, and Neurosurgery

GAY HOLSTEIN, PhD

Associate Professor
Department of Neurology, and Neuroscience

MINGJIA DAI, PhD

Assistant Professor
Department of Neurology

SERGEI YAKUSHIN, PhD

Associate Professor
Department of Neurology

VISITING FACULTY

JEAN BUETTNER-ENNEVER, PhD

Department of Anatomy
Ludwig-Maximilian University
Munich, Germany

CATHERINE CHO, MD

Clinical Associate Professor
Department of Neurology, and Otolaryngology
NYU Langone Medical Center
New York, NY

IAN CURTHOYS, PhD

Emeritus Professor of Vestibular Function
University of Sydney
New South Wales, Australia

ANDRÉ DIEDRICH, MD, PhD

Research Professor of Medicine
Adjunct Research Professor of Biomedical Engineering
Autonomic Dysfunction Center
Vanderbilt University Medical Center
Nashville, TN

CHARLES C. DELLA SANTINA, PhD, MD

Professor
Otolaryngology - Head & Neck Surgery, and Biomedical
Engineering
Director, Vestibular NeuroEngineering Lab
Director, Johns Hopkins Listening Center (Cochlear Implant
Program)
Johns Hopkins School of Medicine
Baltimore, MD

ALBERT FUCHS, PhD

Emeritus Professor
Department of Physiology and Biophysics
University of Washington
Seattle, WA

G. MICHAEL HALMAGYI, BSC, MBBS, MD

Professor
Department of Neurology
Royal Prince Alfred Hospital
Sydney, Australia

RICHARD F. LEWIS, MD

Associate Professor
Department of Otolaryngology, and Neurology
Harvard Medical School
Director, Jenks Vestibular Physiology and Diagnostic Laboratories
Massachusetts Eye and Ear Infirmary
Boston, MA

THEODORE RAPHAN, PhD

Distinguished Professor
Department of Computer and Information Science
Brooklyn College and Graduate Center of City University of
New York
Brooklyn, NY

LAURENCE RETMAN YOUNG, SCD

Apollo Program Professor of Astronautics and Professor of Health
Science and Technology
Massachusetts Institute of Technology
Boston, MA

JANET C. RUCKER, MD

Bernard A. and Charlotte Marden Professor
Department of Neurology
Professor, Department of Ophthalmology
Division Director and Fellowship Director, Neuro-Ophthalmology
NYU Langone Medical Center
New York, NY

BILL YATES, PhD

Professor
Otolaryngology, Neuroscience, and Clinical and Translational
Science
Co-Director, Research Conduct and Compliance Office
Vice-Chair, School of Medicine Curriculum Committee
University of Pittsburgh
Pittsburgh, PA
Editor-in-Chief, *Journal of Neurophysiology*

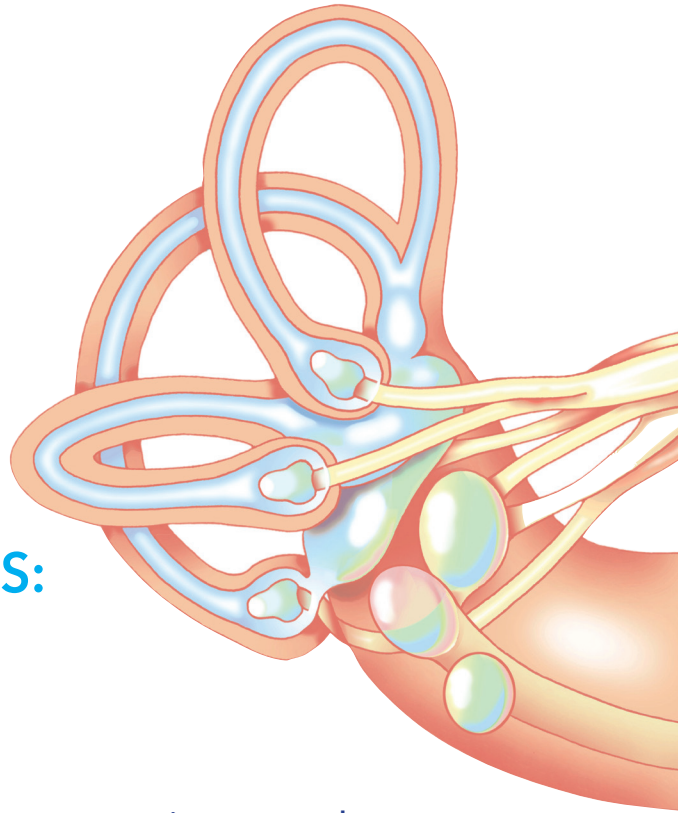
DAVID ZEE, PhD

Professor
Department of Neurology
Johns Hopkins University School of Medicine
Baltimore, MD



Annual YAHR LECTURE
and Celebration of the Career of
BERNARD COHEN, MD

THE VESTIBULAR, CEREBELLAR, AND SYMPATHETIC SYSTEMS: PAST AND FUTURE



Friday, April 13, 2018

There is no registration fee for this event, but you must register to attend.

(Mount Sinai Neurology faculty: please do not register below if you are attending Grand Rounds only. For Grand Rounds only you will sign in as usual and receive one-hour of CME credit.)

Two Ways to Register:

Online: <https://mssm.cloud-cme.com>

Mail: this form to:

Icahn School of Medicine at Mount Sinai
The Page and William Black Post-Graduate School
One Gustave L. Levy Place, Box 1193
New York, NY 10029

LAST NAME FIRST NAME DEGREE

ADDRESS

CITY STATE ZIP

MOBILE PHONE

EMAIL

INSTITUTION/AFFILIATION SPECIALTY

Cancellation Policy: All cancellation requests must be emailed to the CME Office at cme@mssm.edu by April 6, 2018.

For Conference Information:
Email: cme@mssm.edu or call the Office of CME at 212-731-7950