

### Target Audience

Hepatologists, Gastroenterologists, Oncologists, Surgeons, Radiologists, Pathologists and Basic Scientists interested in liver cancer from the New York Area and globally.

### Accreditation

The Icahn School of Medicine at Mount Sinai is accredited by the Accreditation Council for Continuing Medical Education to provide continuing medical education for physicians.

### Credit Designation

The Icahn School of Medicine at Mount Sinai designates this Live educational activity for a maximum of 6.5 AMA PRA Category 1 Credits™. Physicians should only claim credit commensurate with the extent of their participation in the activity.

### Activity Description

This conference will assemble multidisciplinary experts on chronic liver diseases, hepatocellular carcinoma (HCC) and cholangiocarcinoma (CCA) from the Mount Sinai Liver Cancer Program and one outstanding invited lecturer. The live meeting is intended to provide a summary of the state-of-the-art knowledge of the novel advancements reported in 2022 on the pathogenesis and clinical management of liver cancer, including the research conducted in Mount Sinai.

### Activity Learning Objectives

- Review the molecular pathogenesis and target for therapies in HCC and CCA
- Review the current role of surgical and loco-regional treatments for liver cancer
- Critical analysis of molecular and immunotherapies in the management of advanced HCC
- Assess cutting-edge science conducted at the Mount Sinai Liver Cancer Program-2022

### Special Needs

The Icahn School of Medicine at Mount Sinai is in full compliance with provisions of the Americans with Disabilities Act (ADA) and is accessible for individuals with special needs. If you would like to attend this conference and require any special needs or accommodations please send an email to [cme@mssm.edu](mailto:cme@mssm.edu).

### Faculty Disclosure

It is the policy of Icahn School of Medicine at Mount Sinai (ISMMS) to ensure objectivity, balance, independence, transparency, and scientific rigor in all CME-accredited educational activities. All faculty participating in the planning or implementation of an activity accredited by ISMMS are expected to disclose all of their financial relationships with ineligible companies existing within the prior 24 months. Relevant financial relationships will be mitigated and disclosed to learners before the activity takes place. Presenters must also make a meaningful disclosure to the audience of their discussions of unlabeled or unapproved drugs or devices. This information will be available as part of the course material. Refusal to disclose will prohibit participation in an Icahn School of Medicine at Mount Sinai CME-sponsored activity.

### Registration

<https://mssm.cloud-cme.com/livercancer2022>

### Registration Fee

In Person \$25.00

### Cancellation Policy

All refund and cancellation requests must be emailed to the CME office at [cme@mssm.edu](mailto:cme@mssm.edu) by December 5, 2022.

Cancellations after this date are not eligible for a refund. An administrative fee of \$10 will be deducted from your refund.

### Acknowledgement

Exelixis, Eisai, AstraZeneca, Glycotest



Icahn  
School of  
Medicine at  
Mount  
Sinai



Mount  
Sinai

The Tisch Cancer  
Institute

MOUNT SINAI LIVER  
CANCER PROGRAM

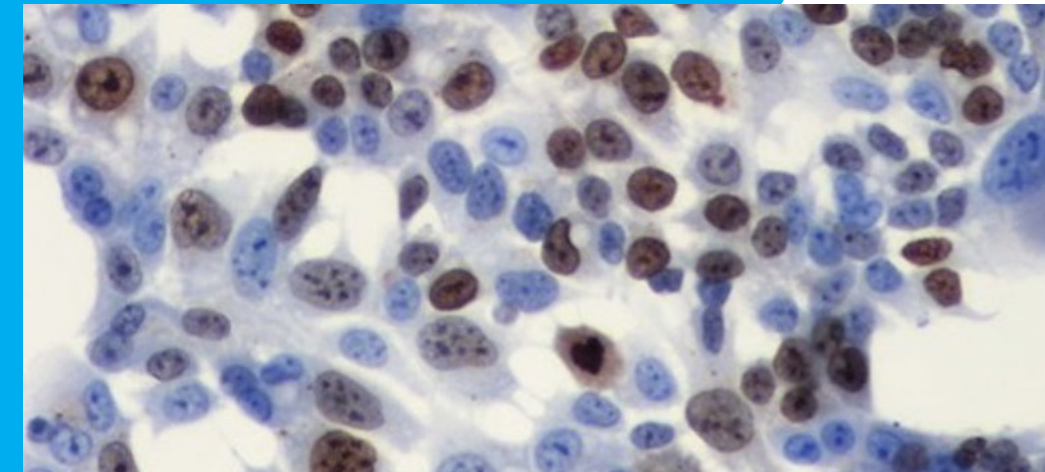
17TH ANNIVERSARY

FULLY LIVE ONSITE ACTIVITY

**LIVER CANCER:**

Updated Review of  
Clinical Management and  
Translational Science

FRIDAY, DECEMBER 16, 2022



MOUNT SINAI LIVER  
CANCER PROGRAM  
17TH ANNIVERSARY  
FULLY LIVE ONSITE ACTIVITY

**LIVER CANCER:**

Updated Review of Clinical Management  
and Translational Science



Leon and Norma Hess Center for Science and Medicine

The Bonnie M. Davis, MD and Kenneth L. Davis, MD  
Auditorium, 2nd floor  
1470 Madison Avenue (Between 101st and 102nd Streets)  
New York, NY

Online Registration

<https://mssm.cloud-cme.com/livercancer2022>

### Program Director

Josep M. Llovet, MD, PhD

Co-Director, Mount Sinai Liver Cancer Program  
Professor of Medicine, Division of Liver Diseases

Sponsored by  
Mount Sinai Liver Cancer Program

1st NCI recognized Liver Cancer Program in the U.S.

## FULLY LIVE ONSITE ACTIVITY

## LIVER CANCER:

Updated Review of Clinical Management and Translational Science  
FRIDAY, DECEMBER 16, 2022

## PROGRAM

<b>8:30 – 9:00AM</b>	<b>Registration</b>
<b>9:00 – 9:10</b>	<b>Welcome and Opening</b> <b>Ramon Parsons, MD, PhD</b> , Director, Tisch Cancer Institute, Ward-Coleman Chair in Cancer Research, Director, Mount Sinai Cancer, Mount Sinai Health System Chair, Department of Oncological Sciences
<b>9:10 – 9:40</b>	<b>Achievements of Mount Sinai Liver Cancer Program 2005 - 2022</b> <b>Josep M. Llovet, MD, PhD</b> , Co-Director Mount Sinai Liver Cancer Program, Division of Liver Diseases

<b>9:40 – 10:20</b>	<b>HANS POPPER LECTURE:</b> Introduction: <b>Josep M. Llovet, MD, PhD</b> , Co-Director Mount Sinai Liver Cancer Program, Division of Liver Diseases
	<b>Inflammation, NASH and HCC</b> <b>Mathias Heikenwaelder, MD, PhD</b> Division of Chronic Inflammation and Cancer, German Cancer Research Center (DKFZ), Heidelberg

**10:20 – 10:40AM** Coffee Break

## CLINICAL MANAGEMENT

<b>10:40 – 12:00pm</b>	<b>EARLY LIVER CANCER</b> <b>Chairman: Myron E. Schwartz, MD</b> , Clinical Director, Mount Sinai Liver Cancer Program, Director of Liver Surgery, Recanati/Miller Transplantation Institute
<b>10:40 – 11:00</b>	<b>Molecular pathology of HCC</b> <b>Swan Thung, MD</b> , Pathology, Molecular & Cell Based Medicine, Mount Sinai Liver Cancer Program
<b>11:00 – 11:20</b>	<b>Imaging for early detection of HCC</b> <b>Bachir Taouli, MD, MS</b> , Department of Radiology, Translational and Molecular Imaging Institute (TMII)
<b>11:20 – 11:40</b>	<b>How surgical approaches might change with neoadjuvant/adjuvant immunotherapy in HCC</b> <b>Myron E. Schwartz, MD</b> , Clinical Director, Mount Sinai Liver Cancer Program, Director of Liver Surgery, Recanati/Miller Transplantation Institute
<b>11:40 – 12:00</b>	<b>SBRT approaches for early HCC</b> <b>Michael Buckstein, MD, PhD</b> , Associate Professor, Department of Radiation Oncology

**12:00 – 12:30PM** Lunch Break

<b>12:30 – 2:00PM</b>	<b>INTERMEDIATE &amp; ADVANCED LIVER CANCER</b> <b>Chairman: Josep M. Llovet, MD, PhD</b> , Co-Director Mount Sinai Liver Cancer Program, Division of Liver Diseases
<b>12:30 – 12:50</b>	<b>Role of TARE in the management of HCC</b> <b>Edward Kim, MD</b> , Director of Interventional Oncology, Professor of Radiology and Surgery, Director, Interventional Oncology, Mount Sinai Liver Cancer Program

**12:50 – 1:10** **New flowchart for molecular and immune therapies for advanced HCC**  
**Josep M. Llovet, MD, PhD**, Co-Director Mount Sinai Liver Cancer Program, Division of Liver Diseases**1:10 – 1:30** **Update on biomarkers of response to systemic therapies**  
**Augusto Villanueva, MD, PhD**, Mount Sinai Liver Cancer Program, Division of Liver Diseases**1:30 – 2:00** **First in human trials for neoadjuvant and advanced liver cancer**  
**Thomas Marron, MD, PhD**, Assistant Director of Immunotherapy and Early Phase Trials, Tisch Cancer Institute, Department of Hematology and Medical Oncology**2:00 – 2:20PM** Coffee Break

## BASIC /TRANSLATIONAL SCIENCE

<b>2:00 – 2:35PM</b>	<b>FLASH COMMUNICATIONS FROM YOUNG INVESTIGATORS</b> Chairman: <b>Scott Friedman, MD</b> , Dean of Therapeutic Discovery, Co-Director Mount Sinai Liver Cancer Program
<b>2:00 – 2:05</b>	<b>Microbiome and HCC</b> <b>Marina Barcena-Varela, PhD</b> , Lujambio Laboratory, Department of Oncological Sciences, Division of Liver Diseases, Tisch Cancer Institute, Mount Sinai Liver Cancer Program
<b>2:05 – 2:10</b>	<b>Translating single-cell to bulk RNA sequencing data to identify responders to checkpoint inhibition in advanced hepatocellular carcinoma</b> <b>Sarah Cappuyns, MD</b> , Visiting Researcher Llovet Laboratory, Division of Liver Diseases, Mount Sinai Liver Cancer Program
<b>2:10 – 2:15</b>	<b>Cell based therapy of NASH/HCC</b> <b>Chittampalli Yashaswini, MD/PhD candidate</b> , Friedman Laboratory, Division of Liver Diseases
<b>2:15 – 2:20</b>	<b>Macrophage diversity in Hepatocellular Carcinoma</b> <b>Pauline Hamon, PhD</b> , Miriam Merad Laboratory, The Tisch Cancer Institute, Marc and Jennifer Lipschultz Precision Immunology Institute at Mount Sinai
<b>2:20 – 2:25</b>	<b>Targeting PRMT5 in hepatocellular carcinoma</b> <b>Elisa Arceci, PhD Candidate</b> , Department of Oncological Sciences, Tisch Cancer Institute
<b>2:25 – 2:35</b>	<b>Primary Results From the Phase 3 LEAP-002 Study: Lenvatinib Plus Pembrolizumab Versus Lenvatinib as First-line Therapy for Advanced Hepatocellular Carcinoma</b> <b>Josep M Llovet, MD, PhD</b> , Co-Director Mount Sinai Liver Cancer Program, Division of Liver Diseases

**2:35 – 2:45PM** Discussion

<b>2:45 – 4:05PM</b>	<b>PATHOGENESIS AND NOVEL TARGETS FOR THERAPIES</b> <b>Chairman: Samuel Waxman, MD</b> , Distinguished Service Professor of Medicine, Department of Hematology and Medical Oncology, Department of Oncological Sciences
<b>2:45 – 3:05</b>	<b>Mechanisms of advanced fibrosis and implications for HCC</b> <b>Scott Friedman, MD</b> , Dean of Therapeutic Discovery, Co-Director, Mount Sinai Liver Cancer Program
<b>3:05 – 3:25</b>	<b>Are MYC and Notch actionable targets in HCC?</b> <b>Amaia Lujambio, PhD</b> , Department of Oncological Sciences
<b>3:25 – 3:45</b>	<b>Drug discovery for targeting Wnt signaling in HCC</b> <b>Ernesto Guccione, PhD</b> , Department of Oncological Sciences
<b>3:45 – 4:05</b>	<b>Cholangiocarcinoma: Assessing drug combinations with checkpoint inhibitors</b> <b>Daniela Sia, PhD</b> , Mount Sinai Liver Cancer Program, Division of Liver Diseases
<b>4:05pm</b>	<b>Closing Remarks</b>

**PROGRAM DIRECTOR**  
**JOSEP M. LLOVET, MD, PhD**  
Co-Director Mount Sinai Liver Cancer Program, Professor of Medicine, Division of Liver Diseases**PROGRAM CHAIRS**  
**SCOTT FRIEDMAN, MD**  
Dean of Therapeutic Discovery, Co-Director Mount Sinai Liver Cancer Program, Division of Liver Diseases**MYRON E. SCHWARTZ, MD**  
Clinical Director, Mount Sinai Liver Cancer Program, Director of Liver Surgery, Recanati/Miller Transplantation Institute**SAMUEL WAXMAN, MD**  
Distinguished Service Professor of Medicine, Department of Hematology and Medical Oncology, Department of Oncological Sciences**GUEST FACULTY**  
**MATHIAS HEIKENWAEELDER, MD, PhD**  
Professor and Department Head, Chronic Inflammation and Cancer, German Cancer Research Center, Deutsches Krebsforschungszentrum (DKFZ) Heidelberg, Germany**HOST FACULTY**  
**MICHAEL BUCKSTEIN, MD, PhD**  
Associate Professor, Department of Radiation Oncology**SCOTT FRIEDMAN, MD**  
Dean of Therapeutic Discovery, Co-Director Mount Sinai Liver Cancer Program, Division of Liver Diseases**ERNESTO GUCCIONE, PhD**  
Department of Oncological Sciences**EDWARD KIM, MD**  
Director of Interventional Oncology, Mount Sinai Liver Cancer Program  
Professor of Radiology and Surgery, Icahn School of Medicine at Mount Sinai**JOSEP M. LLOVET, MD, PhD**  
Co-Director Mount Sinai Liver Cancer Program, Professor of Medicine, Division of Liver Diseases**AMAIA LUJAMBIO, PhD**  
Department of Oncological Sciences**THOMAS MARRON, MD, PhD**  
Director, Early Phase Trials Unit, Tisch Cancer Institute, Department of Hematology and Medical Oncology**RAMON PARSONS, MD, PhD**  
Director, Tisch Cancer Institute, Ward-Coleman Chair in Cancer Research, Director, Mount Sinai Cancer, Mount Sinai Health System, Chair, Department of Oncological Sciences**MYRON E. SCHWARTZ, MD**  
Clinical Director, Mount Sinai Liver Cancer Program, Director of Liver Surgery, Recanati/Miller Transplantation Institute**DANIELA SIA, PhD**  
Mount Sinai Liver Cancer Program, Division of Liver Diseases**BACHIR TAOULI, MD, MS**  
Department of Radiology, Translational and Molecular Imaging Institute (TMII)**SWAN THUNG, MD**  
Pathology, Molecular & Cell Based Medicine, Mount Sinai Liver Cancer Program**AUGUSTO VILLANUEVA, MD, PhD**  
Mount Sinai Liver Cancer Program, Division of Liver Diseases**SAMUEL WAXMAN, MD**  
Distinguished Service Professor of Medicine, Department of Hematology and Medical Oncology, Department of Oncological Sciences**YOUNG INVESTIGATORS**  
**ELISA ARCECI, PhD Candidate**  
Department of Oncological Sciences, Tisch Cancer Institute**MARINA BARCENA-VARELA, PhD**  
Lujambio Laboratory, Department of Oncological Sciences, Division of Liver Diseases, Tisch Cancer Institute, Mount Sinai Liver Cancer Program**SARAH CAPPUYNS, MD**  
Visiting Researcher Llovet Laboratory, Division of Liver Diseases, Mount Sinai Liver Cancer Program**PAULINE HAMON, PhD**  
Miriam Merad Laboratory, The Tisch Cancer Institute, Marc and Jennifer Lipschultz Precision Immunology Institute at Mount Sinai**CHITTAMPALLI YASHASWINI, MD/PhD Candidate**  
Friedman Laboratory, Division of Liver Diseases