



Icahn
School of
Medicine at
Mount
Sinai

Advances in MOVEMENT DISORDERS

*The 12th Annual NYC
Movement Disorder
CME Symposium*

Icahn School of Medicine
at Mount Sinai

The Leon and Norma Hess Center for
Science and Medicine

1470 Madison Avenue, Davis Auditorium
New York, NY

Sunday, May 21, 2023

Course Directors **VICKI SHANKER, MD, FAAN**

Associate Professor
Director, Neurology Residency
Icahn School of Medicine at Mount Sinai (MSBI/MSW)

SUSAN B. BRESSMAN, MD, FAAN

Mirken Professor of Neurology
Director, Bonnie and Tom Strauss Movement Disorders Center
Icahn School of Medicine at Mount Sinai

Sponsored by

Bonnie and Tom Strauss Movement Disorders Center
Department of Neurology
Icahn School of Medicine at Mount Sinai

<https://mssm.cloud-cme.com/MovDis2023>

COURSE DESCRIPTION

This symposium will provide clinicians with a comprehensive review of cutting-edge practices in the diagnosis and management of movement disorders. A broad spectrum of diseases including Parkinson disease, atypical parkinsonism, dystonia, tremor, and gait disorders will be addressed. Through didactic lecture and video review attendees will learn about current medical and cutting-edge diagnostic and management strategies including chemodenervation and neurosurgical interventions (deep brain stimulation and MRI-guided focused ultrasound). Attendees will also learn about recent clinical research advances as well as ongoing clinical trials at the Icahn School of Medicine at Mount Sinai. This comprehensive program will offer learners a compendium of information that will better enable them to practice clinical neurology in 2023 and beyond.

LEARNING OBJECTIVES

- Describe the process for discriminating Parkinson disease from the atypical parkinsonian disorders.
- Explain the diagnostic process and the new classification system for essential tremor, and discuss the patient selection process for surgical management.
- Describe an appropriate movement disorder candidate for neurosurgical intervention including DBS (deep brain stimulation) and MRI-guided high intensity focused ultrasound.
- Discuss a practical strategy for diagnosing gait disorders, including common and uncommon neurologic gait disorders.
- Discuss recent movement disorder clinical trial results and opportunities for patient participation in ongoing clinical trials at Mount Sinai Movement Disorder Center.

Who Should Attend?

This CME activity is designed for pediatric and adult neurologists as well as other specialists in related fields (neurosurgery, psychiatry, rehabilitation medicine, internal medicine, pediatrics, geriatrics); residents and fellows; and other healthcare professionals involved in the care of patients with movement disorders (nurse practitioners, nurses, physician assistants, physical and occupational therapists).

Accreditation

The Icahn School of Medicine at Mount Sinai is accredited by the Accreditation Council for Continuing Medical Education to provide continuing medical education for physicians.

Credit Designation

The Icahn School of Medicine at Mount Sinai designates this live activity for a maximum of 5.0 *AMA PRA Category 1 Credit(s)*[™]. Physicians should claim only the credit commensurate with the extent of their participation in the activity.

Verification of Attendance

Verification of attendance will be provided to all professionals.

Special Needs

The Icahn School of Medicine at Mount Sinai is in full compliance with provisions of the Americans with Disabilities Act (ADA) and is accessible for individuals with special needs. If you would like to attend this conference and require any special needs or accommodations please contact the Page and William Black Post-Graduate School of Medicine at cme@mssm.edu.

Faculty Disclosure

It is the policy of Icahn School of Medicine at Mount Sinai (ISMMS) to ensure objectivity, balance, independence, transparency, and scientific rigor in all CME-accredited educational activities. All faculty participating in the planning or implementation of an activity accredited by ISMMS are expected to disclose all of their financial relationships with ineligible companies existing within the prior 24 months. Relevant financial relationships will be mitigated and disclosed to learners before the activity takes place. Presenters must also make a meaningful disclosure to the audience of their discussions of unlabeled or unapproved drugs or devices. This information will be available as part of the course material.

Advances in Movement Disorders: The 12th Annual NYC Movement Disorder CME Symposium

Department of Neurology
Icahn School of Medicine at Mount Sinai
New York, NY

Sunday, May 21, 2023

PROGRAM



| | |
|---------------|--|
| 7:45–8:00AM | WELCOME AND INTRODUCTIONS |
| 8:00–9:00 | IS IT PARKINSON DISEASE OR ATYPICAL PARKINSONISM? Matthew Swan, MD |
| 9:00–9:45 | FANTASTIC (UNCOMMON) TREMORS AND HOW TO DIAGNOSIS THEM Vicki Shanker, MD, FAAN |
| 9:45–10:00 | BREAK AND EXHIBITS |
| 10:00–11:00 | KEYNOTE SPEAKER: DIAGNOSING GAIT DISORDERS Stephen Reich, MD |
| 11:00–11:15 | BREAK AND EXHIBITS |
| 11:15–12:00PM | WHAT'S NEW IN MOVEMENT DISORDERS? AN UPDATE ON RECENT AND ONGOING CLINICAL TRIALS Winona Tse, MD |
| 12:00–12:45 | MOVEMENT DISORDER SURGERY: UPDATES IN THE FIELD Fedor Panov, MD and Joohi Jimenez-Shahed, MD |
| 12:45–1:15 | LUNCH |
| 1:15–2:00 | MOVEMENT DISORDER VIDEO PRESENTATIONS Faculty |
| 2:00PM | ADJOURN |

FACULTY

Icahn School of Medicine at Mount Sinai

COURSE DIRECTORS

VICKI SHANKER, MD, FAAN

Associate Professor of Neurology
Neurology Residency Program Director

SUSAN B. BRESSMAN, MD, FAAN

Mirken Professor of Neurology

FACULTY

JOOHI JIMENEZ-SHAHED, MD

Associate Professor of Neurology

FEDOR E. PANOV, MD

Assistant Professor of Neurosurgery

MATTHEW SWAN, MD

Assistant Professor of Neurology

WINONA TSE, MD

Associate Professor of Neurology

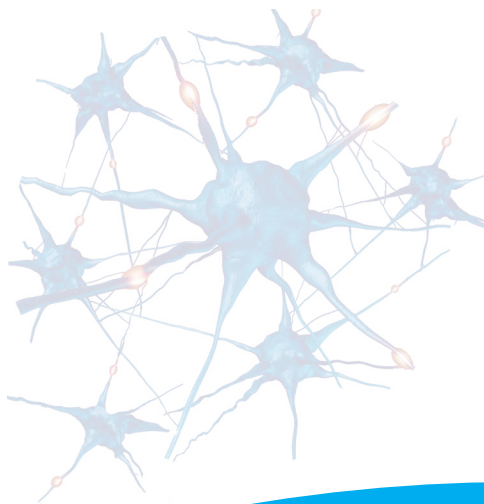
GUEST FACULTY

STEPHEN G. REICH, MD

Frederick Henry Prince Distinguished Professor of
Neurology
University of Maryland School of Medicine
Baltimore, MD

For Conference Information

Email: cme@mssm.edu



Meeting Location

Icahn School of Medicine at Mount Sinai
The Leon and Norma Hess Center for Science and Medicine
1470 Madison Avenue
Davis Auditorium
New York, NY
www.mountsinai.org/about-us/visiting-us/directions



Sunday, May 21, 2023



Icahn School of Medicine at Mount Sinai
The Leon and Norma Hess Center for
Science and Medicine
1470 Madison Avenue
Davis Auditorium
New York, NY

HOW TO REGISTER:

Online: <https://mssm.cloud-cme.com/MovDis2023>

REGISTRATION FEES

| | |
|---|----------------|
| <input type="checkbox"/> Physicians | \$ 150 |
| <input type="checkbox"/> Mount Sinai Neurology Alumni | \$ 75 |
| <input type="checkbox"/> Allied Health Professionals | \$ 75 |
| <input type="checkbox"/> Residents/Fellows | \$ 25 |
| <input type="checkbox"/> MSHS Residents/Fellows | Complimentary* |

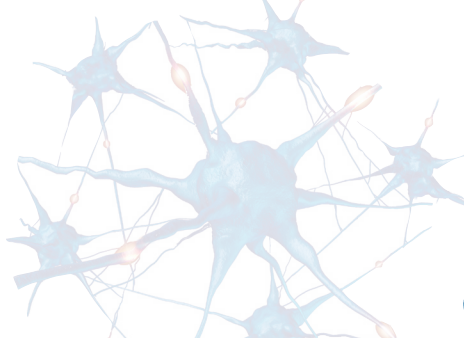
Complimentary registration for MSHS Residents and Fellows **must be done online.*

Mount Sinai Health System (MSHS) Residents and Fellows must email cme@mssm.edu with a copy of their hospital ID to receive a Complimentary Online Registration Code. MSHS Residency and Fellowship will be verified.

Cancellation Policy: All refund and cancellation requests must be emailed to the CME office at cme@mssm.edu by May 8, 2023. Cancellations after this date are not eligible for a refund. An administrative fee of \$50 will be deducted from your refund. No refunds will be issued for registration fees that are equal or less than \$50

For security purposes, credit card payment cannot be accepted by mail or fax. Please visit <http://mssm.cloud-cme.com> to register and pay by credit card.

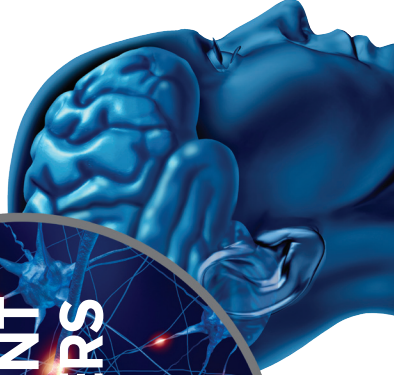
FOR CONFERENCE INFORMATION
Email: cme@mssm.edu



Icahn School of Medicine at Mount Sinai
The Page and William Black Post Graduate School
One Gustave L. Levy Place, Box 1193
New York, NY 10029-6574

Sunday, May 21, 2023

Icahn School of Medicine
at Mount Sinai



<https://mssm.cloud-cme.com/MovDis2023>